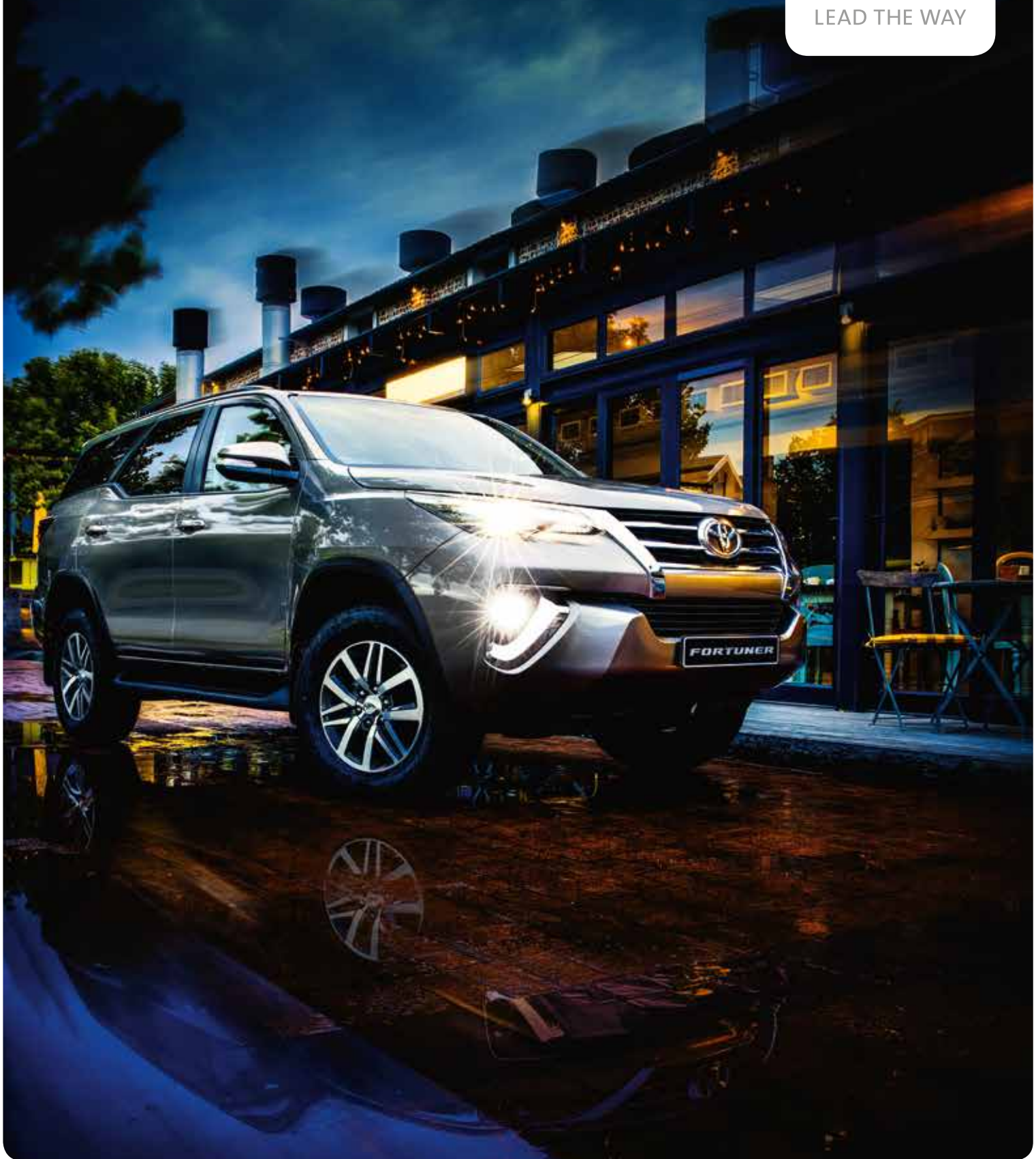




TOYOTA

LEAD THE WAY



FORTUNER



MODEL SHOWN 2.7 VVT1RB AT



THE ALL-NEW FORTUNER. THE LUXURY OF FREEDOM.

REIMAGINED FROM THE GROUND UP,
THE ALL-NEW TOYOTA FORTUNER
IS A BLEND OF LUXURY AND CLASS-LEADING
OFF-ROAD CAPABILITIES.

Under the sleek new design resides a blue-blooded adventurer.
With off-road credentials second to none and a drive that needs to be experienced
to be believed, it's time to re-examine what you think you know about the Fortuner
and discover THE LUXURY OF FREEDOM.





OPEN THE DOORS TO A WHOLE NEW LIFESTYLE

The all-new Fortuner has arrived - and it's more luxurious than ever before.

Here is an SUV that's going places. Comfort and capability combine to create a vehicle that looks as good in the urban jungle as it does on a distant mountain pass. With high-quality finishes you can both see and feel, a bold new grille, an elegant and impressive interior, extra storage and completely redesigned engines - including a new 2.8 litre diesel and 2.7 litre petrol - you now have the luxury to choose the perfect Fortuner to suit your lifestyle.

If you've been looking for a dynamic, fuel-friendly SUV that still delivers on torque, power and looks, then the new Fortuner is the answer.

THE LUXURY OF CHOICE

2.4 GD-6 RB | 2.4 GD-6 RB AT | 2.4 GD-6 4X4 6AT | 2.7 VVTi RB AT | 2.8 GD-6 RB | 2.8 GD-6 4X4 | 2.8 GD-6 RB AT | 2.8 GD-6 4X4 AT | 4.0 V6 4X4 AT

— THE POWER OF —
FREEDOM



GET THERE IN STYLE



Whether you have a clear destination in mind, or you're taking the long way round, the incredible new engines available in the Fortuner will ensure you always have enough power to get there. And there are enough luxurious extras to make sure you get there in style.

Thanks to recent technological developments, the new diesel engines have a smaller capacity with higher torque. The 2.4 litre engine has a torque of 400 Nm @ 1600-2000 r/min and a power output of 100 kW @ 3400 r/min. The new 2.8 litre auto engine has a torque of 450 Nm @ 1600-2400 r/min and a power output of 130 kW @ 3400 r/min, while the manual has a torque of 420 Nm @ 1400-2600r/min and a power output of 130 kW @ 3400 r/min. Once again the driver is on the winning end, as these innovations translate into more than just better power, but lower fuel consumption too.

The petrol motor line-up has been expanded to include a new 2.7 litre petrol engine with a towing capacity of 2.5 tonnes, torque of 245 Nm @ 4000 r/min and a power output of 122 kW @ 5200 r/min. This petrol option operates off the new six-speed auto transmission, which has numerous advantages, including lower fuel consumption and a more eco-friendly drive.

MODELS SHOWN 2.7 VVTi RB AT

GEARING UP

What does the road ahead look like?

No matter where you're headed, there is a range of options available to you. The choice is yours: 2x4, 4x4, six-speed manual or auto. And if you choose a 4x4, you now have a conveniently located electronic switch that replaces the range change lever, allowing you to change between 4WD, 4WD LOW and 2WD with a flick of the wrist.

When on the open road, you're in for smooth sailing - the addition of the sixth gear in both the manual and auto options means the gear ratio spread has been optimised and cruising revs per minute have been lowered.

Engine sound has also been reduced, meaning a much quieter drive, ideal for exploring the great outdoors. As part of this advancement, your first gear is now sharper and shorter, which bumps up the take-off power and increases the pulling power - just right for towing. Not only does this mean less engine noise, it's also a way to better fuel economy - perfect for you and the environment.

For those who desire efficiency, Eco Drive Mode can be activated at the touch of a button. When the vehicle is being driven efficiently, the Eco Lamp on the Multi-Information Display will illuminate to let you know that you're on the right track.

While moving up or down the gears, the new Intelligent Manual Transmission *(IMT) anticipates your changes then matches the engine speed to the transmission speed, preventing jerks and drastic drops in speed after gears are changed, resulting in an even rev count, seamless shifting and achieving high-fuel efficiency.

All models come with cruise control - perfect for trips out into the country, allowing you to sit back, admire the view and relax on longer stretches of road.

**Only available on the 2.8 MT models*



MODEL SHOWN 2.7 VVTI RB AT

WHEN THE GREAT OUTDOORS IS CALLING, ANSWER.



No matter where you go and whatever the weather – mountain pass or overpass, torrential downpour or a desert sandstorm – you're always comfortable and in control in your Fortuner.

Bumpy outrides are history. Improved suspension offers more stability and better handling responses. The size of the shock absorbers has also been increased, giving you more comfort over small vibrations, and a repositioned lateral rod reduces movement when exploring rough roads.

But the advancements go much deeper than the upgraded suspension. At the core of the Fortuner's off-road prowess is its frame. The entire frame structure has been redeveloped, improving torsional and bend rigidity, ensuring durability, drive quality, comfort and, most importantly, safety.

The Fortuner is equally at home navigating the tight turns of a steep overgrown path leading to a secluded cabin, as it is manoeuvring down a white-knuckle rocky descent.

Hill-Assist Control (HAC) detects when you're on a slope and automatically engages so that the vehicle doesn't roll back.

To prevent the wheels from locking up on tricky downhills in the 4x4 models, the **Downhill-Assist Control* (DAC)** system takes command of the vehicle's **Anti-lock Braking System (ABS)**, controlling brake pressure in situations when engine braking isn't enough.

To make sure you stay cool and in control, the radiator has been improved to balance the power of the new engines. This reduces the risk of overheating – no matter how severe the environment or how big the load being towed.

Towing capacity has been increased to a maximum of three tonnes, and when under load, **Trailer-Sway Control (TSC)** suppresses movement between the Fortuner and whatever you're towing, keeping you safe and in control.

*Only available on the 2.8 4X4 MT, 2.8 4X4 AT and 4.0 4X4 AT



MODEL SHOWN LEFT 2.8GD-6 4X4 AT MODEL SHOWN RIGHT 2.7 VVTI RB AT

FREEDOM
— TO EXPRESS —





Whether you're gently crunching over imported gravel alongside manicured lawns, or blazing a path over rocks up a forgotten mountainside, with the Fortuner you will always arrive in style.

Sophisticated yet resilient. Refined yet powerful. From the 18-inch alloy* wheels to the new grille, the Fortuner expresses the dual nature of today's modern lifestyle. While the vehicle is still known for its unmistakable off-road superiority - and of course, quality, durability and reliability - its exceptional new style now also gives you the freedom to be seen and admired while out on the town.

With its new refined body, there's an unmistakable urban appeal to the latest incarnation of the Fortuner. A redesigned front grille gives it a more cosmopolitan look; the upper edges of the grille have an added curve with a steeper slant, making the front design even wider and more striking than before.

** 18" Alloy wheels are available on the 2.8l and 4.0l only*



MODELS SHOWN 2.7 VVTI RB AT

A STEP ABOVE



Towering above the grit and the grime, the high body axis gives you an elevated viewpoint. The design lines run over the flared front and along the doors to meet at the rear fenders. From any angle, the sculptured surfaces merge and change to create a seamless flow.

To light your way, the 2.4 litre and 2.7 litre Fortuner models have bi-halogen headlamps and fog lamps at the front, LED rear combination lamps and an LED high-mount stop lamp at the back. These larger, stylish light clusters are augmented by colour-coded exterior mirrors.

On the 2.8 litre and 4.0 litre models, lighting is taken care of by LED headlamps in the bold new chrome grille, LED rear combination lamps, LED front fog lamps, striking Daytime Running Lights (DRL) and Follow Me Home lights for when you return to civilisation.

All vehicles have integrated exterior mirrors that are auto-retractable and electronically adjustable.

MODEL SHOWN 2.8 GD-6 4X4 AT



FIVE-STAR
FREEDOM



INTERIOR SHOWN 2.8 6D-6 4X4 AT



THE LUXURY OF SPACE



THE SEATS ARE IN A 60:40 COMBINATION



ONE-TOUCH TUMBLE SLIDE REAR SEATS ALLOW FOR DIFFERENT SPACE CONFIGURATIONS



CONTROL SWITCHES ON THE STEERING WHEEL



DISPLAY AUDIO



LEATHER AND WOOD FINISH ON THE STEERING WHEEL



MANUAL TRANSMISSION



USB PORT



MULTI-INFORMATION DISPLAY

Nothing evokes a greater feeling of freedom than space. Space to move. Space to explore. And of course, space to stow all your gear. With boot capacity large enough to accommodate your riding tack, golf clubs or sailing togs, you'll have no hassle transporting whatever you need to enjoy the great outdoors. In the centre console of the standard and high-grade models, you'll also find a front cooler box, chilled to just the right temperature to store your beverages.

The 4.0 litre and 2.8 litre models are equipped with a power back door system that can be opened and closed electronically from the driver's seat or the wireless key. The power back door has a memory function, which allows users the option of storing an automatic stop position for each time the back door opens. And to ensure you and your passengers' safety, a jam-protection function detects obstructions through changes in pulses from the motors when opening and closing the back door.



REAR SEAT CUP HOLDERS

FIVE-STAR FREEDOM

Equally at home under the stars as it is under big city bright lights, the refined elegance of the new Fortuner that flows from the inside to the out is immediately apparent. Everything has been carefully considered, from the bold, highly stylish design to the sophisticated technology incorporated throughout. The attention to detail is apparent. Thick metallic accents combine with wood grain-patterned ornamentation, which further expresses the vehicle's personality. The overall design comes together to evoke a feeling of THE LUXURY OF SPACE. Once inside, passengers and the driver have ample room to stretch out and enjoy the sensation of comfort and prestige.

THE LAP OF LUXURY

The interior finishes are also of a superior nature. Stylish leather seats are complete with intricate stitching detail. The doors on all models are finished with a leather trim. The seats are in a 60:40 combination, with the addition of one-touch tumble slide rear seats. In keeping with the convenience of good design, these third-row seats can be folded using one touch, making it easy to free up space for luggage or to create a row of seats for extra passengers.

The steering wheel column can also be personalised: a telescopic function has been added so that the column can be moved to suit your driving style. From the driver seat, you can also keep an eye on the rear-view monitor so that you know exactly what is going on behind you.

THE CENTRE OF ATTENTION

Clean, slick and modern – the newly streamlined dashboard and centre console lights up with an audio and display operating system that's guaranteed to get attention.

A new high-definition colour Multi-Information Display (MID) has been added and has all the information you need. From frequently checked items such as internal temperature, speed and trip information, through to menu and display options. All MID content can be controlled via switches conveniently located on the steering wheel.

Bluetooth comes standard across the range and the 4.0 litre model has an audio-visual navigation system.

For passengers who feel like watching a movie or TV series, the New Fortuner 4.0 litre model delivers entertainment via a large 7" touchscreen DVD system (2.8 and 4.0 litre models only) that works off auxiliary and USB ports.

INTERIOR SHOWN 2.8 GD-6 4X4 AT



PUSH START SYSTEM

Safety is always a top priority for Toyota.

The Fortuner comes equipped with a Push Start system. This starts the engine at the push of a button, ensuring that there is no lag in getting your vehicle on the road.

Once you're moving, Auto Door Lock is activated and locks the doors to prevent entry from the outside. To protect your most precious cargo, Child Lock ensures that there are absolutely no mishaps with back-seat, passenger door safety. On all models, anti-theft systems operate silently in the background. The anti-theft system features include an independently powered siren, an advanced immobiliser, as well as an ultrasonic glass-breaking and intrusion sensor.

BEING SMART ABOUT SAFETY: THE LUXURY OF SAFETY

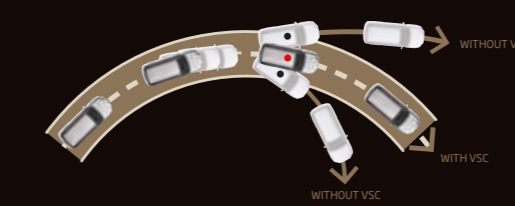


CHILD RESTRAINT SYSTEM (ISOFIX)

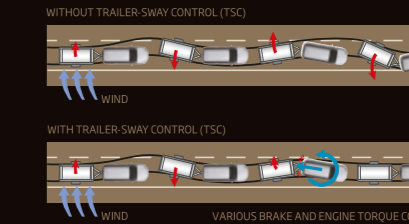
It's like a luxurious coat of armour. Recent technological updates have resulted in an overall strengthening of the Fortuner's frame. High-tensile-strength steel sheets and supplementary materials have been incorporated throughout to improve safety. All together, these impact-absorbing and high-strength structures help reduce driver and passenger injuries. Newly installed **ISOFIX seat belts** ensure that the point of tension is relative to the impact, while the **Anti-lock Braking System (ABS)** and **Electronic Brake-force Distribution (EBD)** act to stabilise the vehicle.

In an emergency, there are up to seven airbags. Driver, front passenger, curtain shield, driver knee airbags and side airbags are activated depending on the situation. And, when in transit, **Vehicle-Stability Control (VSC)** is there to minimise the chance that any of the above becomes necessary.

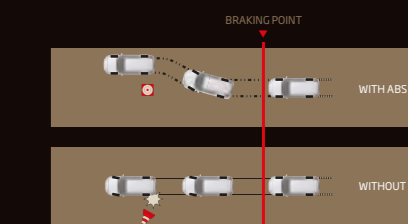
THE LUXURY OF PROTECTION



VEHICLE-STABILITY CONTROL (VSC)



TRAILER-SWAY CONTROL (TSC)



ANTI-LOCK BRAKING SYSTEM (ABS)



PRESERVING NATURE'S
FREEDOM

Fortuner drivers share a passion for adventure and the beauty of the great outdoors. That's why we're dedicated to preserving the environment for future generations. The fuel-efficient engines of the Fortuner range help reduce CO₂ emissions and the carbon footprint of the vehicles. Plastics highly recyclable are used in the instrument panel, door trims and the majority of the interior and exterior components. The plastic components have also been uniquely designed so that they are easier to dismantle for recycling.

Toyota is serious about combating the problems associated with waste tyres in the country and has therefore taken up its producer responsibility as defined by the Waste Management Act of 2008. Waste Tyre Registration Number: TPREG0031GAU

Model	Fuel consumption (combined cycle) (l/100km)	CO ₂ emissions (g/km)
2.4 GD-6 RB	7.0	184
2.4 GD-6 RB AT	7.9	208
2.4 GD-6 4x4 AT	7.9	208
2.7 VVTi RB AT	10.5	247
2.8 GD-6 RB	7.5	196
2.8 GD-6 4x4	7.8	204
2.8 GD-6 RB AT	8.0	212
2.8 GD-6 4x4 AT	8.5	224
4.0 V6 4x4 AT	12.0	277

FROM ECO-ESTATES TO ECO DRIVE MODE YOU HAVE THE POWER TO MAKE A DIFFERENCE

	2.4 GD-6 RB GMT	2.4 GD-6 RB GAT	2.4 GD-6 4x4 GAT	2.7 VVTi RB GAT	2.8 GD-6 RB GMT	2.8 GD-6 RB GAT	2.8 GD-6 4x4 GMT	2.8 GD-6 4x4 GAT	4.0 V6 4x4 GAT
Engine and drivetrain									
1 st Gear Ratio	4.784	3.600	3.600	3.600	4.784	3.600	4.784	3.600	3.600
2 nd Gear Ratio	2.423	2.090	2.090	2.090	2.423	2.090	2.423	2.090	2.090
3 rd Gear Ratio	1.443	1.488	1.488	1.488	1.443	1.488	1.443	1.488	1.488
4 th Gear Ratio	1.000	1.000	1.000	1.000	1.000	1.000	1.000	1.000	1.000
5 th Gear Ratio	0.777	0.687	0.687	0.687	0.826	0.687	0.826	0.687	0.687
6 th Gear Ratio	0.643	0.580	0.580	0.580	0.643	0.580	0.643	0.580	0.580
Bore x stroke (mm)	92.0 x 90.0	92.0 x 90.0	92.0 x 90.0	95.0 x 95.0	92.0 x 103.6	92.0 x 103.6	92.0 x 103.6	92.0 x 103.6	94.0 x 95.0
Compression ratio	15.6:1	15.6:1	15.6:1	10.2:1	15.6:1	15.6:1	15.6:1	15.6:1	10.0:1
Differential gear ratio	3.583	4.100	4.100	4.555	3.583	3.909	3.583	3.909	3.909
Differential lock	•	•	•	•	•	•	•	•	•
Displacement (cm³)	2393	2393	2393	2694	2755	2755	2755	2755	3956
Driven wheels	RWD	RWD	4WD / part-time	RWD	RWD	RWD	4WD / part-time	4WD / part-time	4WD / part-time
Emission control	Euro 2-without OBD	Euro 2-without OBD	Euro 2-without OBD	Euro 2-without OBD	Euro 2-without OBD	Euro 2-without OBD	Euro 2-without OBD	Euro 2-without OBD	Euro 2-without OBD
Fuel system	Diesel	Diesel	Diesel	Petrol	Diesel	Diesel	Diesel	Diesel	Petrol
Maximum power (kW @ r/min)	110@3400	110@3400	110@3400	122@5200	130@3400	130@3400	130@3400	130@3400	175@5200
Maximum torque (Nm @ r/min)	400@1600-2000	400@1600-2000	400@1600-2000	245@4000	420@1400 - 2600	450@1600 - 2400	420@1400 - 2600	450@1600 - 2400	376@3800
Number of cylinders and arrangement	Inline-4	Inline-4	Inline-4	Inline-4	Inline-4	Inline-4	Inline-4	Inline-4	V-type-6
Reverse gear ratio	4.066	3.792	3.792	3.792	4.066	3.792	4.066	3.792	3.792
Stabiliser	Front & rear	Front & rear	Front & rear	Front & rear	Front & rear	Front & rear	Front & rear	Front & rear	Front & rear
Starting system	Push start	Push start	Push start	Push start	Push start	Push start	Push start	Push start	Push start
Suspension (rear)	Four link	Four link	Four link	Four link	Four link	Four link	Four link	Four link	Four link
Tool set	Driver, basic & spanner	Driver, basic & spanner	Driver, basic & spanner	Driver, basic & spanner	Driver, basic & spanner	Driver, basic & spanner	Driver, basic & spanner	Driver, basic & spanner	Driver, basic & spanner
Transmission	Manual-6-speed	Automatic-6-speed	Automatic-6-speed	Automatic-6-speed	Manual-6-speed	Automatic-6-speed	Manual-6-speed	Automatic-6-speed	Automatic-6-speed
Suspension (front)	Double wishbone	Double wishbone	Double wishbone	Double wishbone	Double wishbone	Double wishbone	Double wishbone	Double wishbone	Double wishbone
Engine capacity (%)	2.4	2.4	2.4	2.7	2.8	2.8	2.8	2.8	4.0
Wheels and tyres									
Spare tyre	Full-alloy	Full-alloy	Full-alloy	Full-alloy	Full-alloy	Full-alloy	Full-alloy	Full-alloy	Full-alloy
Spare wheel carrier	Under body	Under body	Under body	Under body	Under body	Under body	Under body	Under body	Under body
Wheel and tyre	265/65R17 alloy	265/65R17 alloy	265/65R17 alloy	265/65R17 alloy	265/60R18 alloy	265/60R18 alloy	265/60R18 alloy	265/60R18 alloy	265/60R18 alloy
Exterior features									
Daytime Running Lights (DRL)	•	•	•	•	•	•	•	•	•
Door outside handles	Chrome-smart entry	Chrome-smart entry	Chrome-smart entry	Chrome-smart entry	Chrome-smart entry	Chrome-smart entry	Chrome-smart entry	Chrome-smart entry	Chrome-smart entry
Engine under cover & protector	•	•	•	•	•	•	•	•	•
Front bumper	Colour coded	Colour coded	Colour coded	Colour coded	Colour coded	Colour coded	Colour coded	Colour coded	Colour coded
Front fog lamps	•	•	•	•	LED	LED	LED	LED	LED
Headlights	Bi-halogen	Bi-halogen	Bi-halogen	Bi-halogen	LED	LED	LED	LED	LED
Headlamp levelling	•	•	•	•	Automatic	Automatic	Automatic	Automatic	Automatic
High-mounted brake light	LED	LED	LED	LED	LED	LED	LED	LED	LED

	2.4 GD-6 RB GMT	2.4 GD-6 RB GAT	2.4 GD-6 4x4 GAT	2.7 VVTi RB GAT	2.8 GD-6 RB GMT	2.8 GD-6 RB GAT	2.8 GD-6 4x4 GMT	2.8 GD-6 4x4 GAT	4.0 V6 4x4 GAT
Exterior features									
Light control system	•	•	•	•	Follow me home, auto light control system	Follow me home, auto light control system	Follow me home, auto light control system	Follow me home, auto light control system	Follow me home, auto light control system
Luggage boot / rear door	•	•	•	•	Power	Power	Power	Power	Power
Side mirrors	Colour coded, retractable, power	Colour coded, retractable, power	Colour coded, retractable, power	Colour coded, retractable, power	Colour coded, retractable, power	Colour coded, retractable, power	Colour coded, retractable, power	Colour coded, retractable, power	Colour coded, retractable, power
Over-fenders	•	•	•	•	•	•	•	•	•
Front grille	Chrome	Chrome	Chrome	Chrome	Chrome	Chrome	Chrome	Chrome	Chrome
Rear bumper	Colour coded	Colour coded	Colour coded	Colour coded	Colour coded	Colour coded	Colour coded	Colour coded	Colour coded
Rear lights	LED	LED	LED	LED	LED	LED	LED	LED	LED
Tow hook	•	•	•	•	•	•	•	•	•
Rear window wiper	Intermittent	Intermittent	Intermittent	Intermittent	Intermittent	Intermittent	Intermittent	Intermittent	Intermittent
Mud guards	Front & rear	Front & rear	Front & rear	Front & rear	Front & rear	Front & rear	Front & rear	Front & rear	Front & rear
Rear spoiler	•	•	•	•	•	•	•	•	•
Roof rails	•	•	•	•	•	•	•	•	•
Side step	Black	Black	Black	Black	Black	Black	Black	Black	Black
Interior comfort and convenience									
AT shift lock	•	•	•	•	•	•	•	•	•
4WD indicator	•	•	•	•	•	•	•	•	•
4WD selector	•	•	•	•	•	•	•	Switch	Switch
Assist grip	8	8	8	8	8	8	8	8	8
Centre console box	Front	Front	Front	Front	Front	Front	Front	Front	Front
Cup holders	•	•	•	•	•	•	•	•	•
Door inside handles	Chrome	Chrome	Chrome	Chrome	Chrome	Chrome	Chrome	Chrome	Chrome
Floor carpet trim	Carpet / with heel pad	Carpet / with heel pad	Carpet / with heel pad	Carpet / with heel pad	Carpet / with heel pad	Carpet / with heel pad	Carpet / with heel pad	Carpet / with heel pad	Carpet / with heel pad
Front headrest	Adjustable-2	Adjustable-2	Adjustable-2	Adjustable-2	Adjustable-2	Adjustable-2	Adjustable-2	Adjustable-2	Adjustable-2
Glove box	Lockable / coolbox	Lockable / coolbox	Lockable / coolbox	Lockable / coolbox	Lockable / coolbox	Lockable / coolbox	Lockable / coolbox	Lockable / coolbox	Lockable / coolbox
Key reminder warning	•	•	•	•	•	•	•	•	•
Overhead console	Sunglass holder	Sunglass holder	Sunglass holder	Sunglass holder	Sunglass holder	Sunglass holder	Sunglass holder	Sunglass holder	Sunglass holder
Rear headrests	Adjustable-5	Adjustable-5	Adjustable-5	Adjustable-5	Adjustable-5	Adjustable-5	Adjustable-5	Adjustable-5	Adjustable-5
2 nd row seats	60:40	60:40	60:40	60:40	60:40	60:40	60:40	60:40	60:40
Room lamp	•	•	•	•	•	•	•	•	•
Seat trim	Partial leather	Partial leather	Partial leather	Partial leather	Partial leather	Partial leather	Partial leather	Partial leather	Partial leather
Shift lever & knob	Urethane	Urethane	Urethane	Urethane	Leather	Leather	Leather	Leather	Leather
3 rd row seats	Fold up	Fold up	Fold up	Fold up	Fold up	Fold up	Fold up	Fold up	Fold up
Cruise control	•	•	•	•	•	•	•	•	•
Airconditioner	Manual	Manual	Manual	Manual	Auto	Auto	Auto	Auto	Auto
Audio system	Toyota / RDS	Toyota / RDS	Toyota / RDS	Toyota / RDS	Toyota / DAB, RDS, Display audio	Toyota / DAB, RDS, Display audio	Toyota / DAB, RDS, Display audio	Toyota / DAB, RDS, Display audio	Toyota / DAB, RDS, Display audio

	2.4 GD-6 RB GMT	2.4 GD-6 RB GAT	2.4 GD-6 4x4 GAT	2.7 VVTi RB GAT	2.8 GD-6 RB GMT	2.8 GD-6 RB GAT	2.8 GD-6 4x4 GMT	2.8 GD-6 4x4 GAT	4.0 V6 4x4 GAT
Interior comfort and convenience									
Auxiliary input	•	•	•	•	•	•	•	•	•
Reverse camera	•	•	•	•	•	•	•	•	•
Bluetooth	•	•	•	•	•	•	•	•	•
Disc type	CD	CD	CD	CD	DVD	DVD	DVD	DVD	DVD
Illuminated entry	•	•	•	•	•	•	•	•	•
Multi-Information Display	•	•	•	•	TFT	TFT	TFT	TFT	TFT
Navigation system	•	•	•	•	•	•	•	•	•
Power socket	Boot - 12V, Rear - 12V, Front - 12V	Boot - 12V, Rear - 12V, Front - 12V	Boot - 12V, Rear - 12V, Front - 12V	Boot - 12V, Rear - 12V, Front - 12V	Rear - 220V, Boot - 12V, Rear - 12V, Front - 12V	Rear - 220V, Boot - 12V, Rear - 12V, Front - 12V	Rear - 220V, Boot - 12V, Rear - 12V, Front - 12V	Rear - 220V, Boot - 12V, Rear - 12V, Front - 12V	Rear - 220V, Boot - 12V, Rear - 12V, Front - 12V
Electric windows	All / all one touch	All / all one touch	All / all one touch	All / all one touch	All / all one touch	All / all one touch	All / all one touch	All / all one touch	All / all one touch
Rear air conditioner	Manual	Manual	Manual	Manual	Auto	Auto	Auto	Auto	Auto
Speakers	4	4	4	4	6	6	6	6	6
Steering column adjustments	Manual / tilt & telescopic	Manual / tilt & telescopic	Manual / tilt & telescopic	Manual / tilt & telescopic	Manual / tilt & telescopic	Manual / tilt & telescopic	Manual / tilt & telescopic	Manual / tilt & telescopic	Manual / tilt & telescopic
Steering switches	Info display, telephone, audio	Info display, telephone, audio	Info display, telephone, audio	Info display, telephone, audio	Info display, telephone, audio	Info display, telephone, audio	Info display, telephone, audio	Info display, telephone, audio	Info display, telephone, audio
USB	•	•	•	•	•	•	•	•	•
Door courtesy lamp	•	•	•	•	•	•	•	•	•

Safety

Anti-theft system	Siren / alarm & immobiliser, ultrasonic sensor and glass-break sensor	Siren / alarm & immobiliser, ultrasonic sensor and glass-break sensor	Siren / alarm & immobiliser, ultrasonic sensor and glass-break sensor	Siren / alarm & immobiliser, ultrasonic sensor and glass-break sensor	Siren / alarm & immobiliser, ultrasonic sensor and glass-break sensor	Siren / alarm & immobiliser, ultrasonic sensor and glass-break sensor	Siren / alarm & immobiliser, ultrasonic sensor and glass-break sensor	Siren / alarm & immobiliser, ultrasonic sensor and glass-break sensor	Siren / alarm & immobiliser, ultrasonic sensor and glass-break sensor
Auto door lock	Speed dependent	Speed dependent	Speed dependent	Speed dependent	Speed dependent	Speed dependent	Speed dependent	Speed dependent	Speed dependent
Centre rear seatbelt	3-point	3-point	3-point	3-point	3-point	3-point	3-point	3-point	3-point
Child lock	•	•	•	•	•	•	•	•	•
Child restraint system (ISOFIX)	2	2	2	2	2	2	2	2	2
Emergency brake signal	•	•	•	•	•	•	•	•	•
Front airbag(s)	Driver & passenger	Driver & passenger	Driver & passenger	Driver & passenger	Driver & passenger	Driver & passenger	Driver & passenger	Driver & passenger	Driver & passenger
Side airbags	•	•	•	•	•	•	•	•	•
Knee airbag(s)	•	•	•	•	•	•	•	•	•
Curtain airbags	•	•	•	•	•	•	•	•	•
Front brake	Ventilated disc	Ventilated disc	Ventilated disc	Ventilated disc	Ventilated disc	Ventilated disc	Ventilated disc	Ventilated disc	Ventilated disc
Front seat belts	Force limiter, pretensioner, ELR	Force limiter, pretensioner, ELR	Force limiter, pretensioner, ELR	Force limiter, pretensioner, ELR	Force limiter, pretensioner, ELR	Force limiter, pretensioner, ELR	Force limiter, pretensioner, ELR	Force limiter, pretensioner, ELR	Force limiter, pretensioner, ELR
Power door lock	Auto door lock	Auto door lock	Auto door lock	Auto door lock	Auto door lock	Auto door lock	Auto door lock	Auto door lock	Auto door lock
Rear brake	Disc	Disc	Disc	Disc	Disc	Disc	Disc	Disc	Disc
Rear seat belts	ELR	ELR	ELR	ELR	ELR	ELR	ELR	ELR	ELR
Seat belt warning	Driver, passenger & rear	Driver, passenger & rear	Driver, passenger & rear	Driver, passenger & rear	Driver, passenger & rear	Driver, passenger & rear	Driver, passenger & rear	Driver, passenger & rear	Driver, passenger & rear
Wireless door lock	Smart entry	Smart entry	Smart entry	Smart entry	Smart entry	Smart entry	Smart entry	Smart entry	Smart entry

	2.4 GD-6 RB GMT	2.4 GD-6 RB GAT	2.4 GD-6 4x4 GAT	2.7 VVTi RB GAT	2.8 GD-6 RB GMT	2.8 GD-6 RB GAT	2.8 GD-6 4x4 GMT	2.8 GD-6 4x4 GAT	4.0 V6 4x4 GAT
Safety									
Anti-lock Braking System (ABS)	•	•	•	•	•	•	•	•	•
Brake Assist (BA)	•	•	•	•	•	•	•	•	•
Electronic Brake-force Distribution (EBD)	•	•	•	•	•	•	•	•	•
Hill-Assist Control (HAC)	•	•	•	•	•	•	•	•	•
Traction Control (TRC)	•	•	•	•	•	•	Active Traction Control (ATRC)	Active Traction Control (ATRC)	Active Traction Control (ATRC)
Vehicle Stability Control (VSC)	•	•	•	•	•	•	•	•	•
Trailer Sway Control (TSC)	•	•	•	•	•	•	•	•	•
Drive Mode Select	Sport, Eco	Sport, Eco	Sport, Eco	Sport, Eco	IMT, Sport, Eco	Sport, Eco	IMT, Sport, Eco	Sport, Eco	Sport, Eco
Downhill-Assist Control (DAC)	•	•	•	•	•	•	•	•	•

Performance

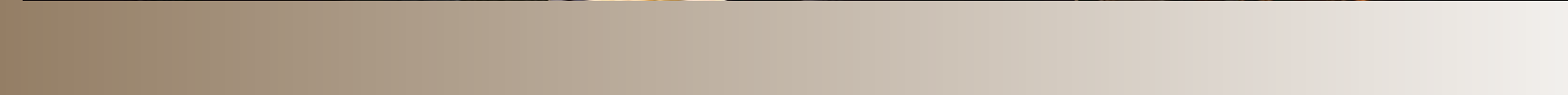
Fuel consumption (combined cycle) (l/100 km)	7.0	7.9	8.2	10.5	7.5	8.0	7.8	8.5	12.0
CO ₂ (g/km)	184	208	217	247	196	212	204	224	277

Service and warranty

Service intervals (km)	10 000 km	10 000 km	10 000 km	10 000 km	10 000 km	10 000 km	10 000 km	10 000 km	10 000 km
Service plan	5 years/90 000 km	5 years/90 000 km	5 years/90 000 km	5 years/90 000 km	5 years/90 000 km	5 years/90 000 km	5 years/90 000 km	5 years/90 000 km	5 years/90 000 km
Warranty	3 years/100 000 km	3 years/100 000 km	3 years/100 000 km	3 years/100 000 km	3 years/100 000 km	3 years/100 000 km	3 years/100 000 km	3 years/100 000 km	3 years/100 000 km

Dimensions and capacities

Fuel Tank Size (l)	80	80	80	80	80	80	80	80	80
Gross Combination Mass (GCM)	5105	5105	5105	5000	5110	5110	5760	5760	5660
Ground clearance (mm)	279	279	279	279	279	279	279	279	279
Gross Vehicle Mass (GVM)	2605	2605	2705	2500	2610	2610	2760	2760	2650
Height (mm)	1835	1835	1835	1835	1835	1835	1835	1835	1835
Length (mm)	4795	4795	4795	4795	4795	4795	4795	4795	4795
Towing capacity - unbraked (kg)	750	760	750	750	750	750	750	750	750
Towing capacity - braked (kg)	2500	2500	2500	2500	2500	2500	3000	3000	3000
Turning circle (tyres, m)	5.8	5.8	5.8	5.8	5.8	5.8	5.8	5.8	5.8
Wheelbase (mm)	2745	2745	2745	2745	2745	2745	2745	2745	2745
Width (mm)	1855	1855	1855	1855	1855	1855	1855	1855	1855



CHOICE DETAILS

THE EXTENSIVE RANGE OF GENUINE FORTUNER ACCESSORIES GIVES YOU THE LUXURY OF CHOICE.

EXTERIOR STYLING ACCESSORIES

FRONT UNDER RUN	REAR UNDER RUN	HOOD GARNISH	HEADLAMP GARNISH	BODY SIDE MOULDING
				
FRONT UNDER RUN PART NUMBER: PC4170K001 <i>Not compatible with Nudge Bars</i>	REAR UNDER RUN PART NUMBER: PC4150K001 <i>Not compatible with Tow Bars</i>	HOOD GARNISH - CHROME PART NUMBER: PC4010K001	HEADLAMP GARNISH - CHROME PART NUMBER: PC4020K009 <i>Not compatible with Headlamp Guards</i>	BODY SIDE MOULDING - CHROME PART NUMBER: PC1700K00H

DOOR HANDLE GARNISH	REAR LAMP GARNISH	REAR BUMPER GARNISH	REAR BUMPER STEP GUARD	EXHAUST TIP
				
DOOR HANDLE GARNISH: BLACK AND CHROME (4pcs) PART NUMBER: PC1680K00Y	REAR LAMP GARNISH: CHROME PART NUMBER: PC4100K008	REAR BUMPER GARNISH: CHROME PART NUMBER: PC4110K001	REAR BUMPER STEP GUARD: ALUMINIUM PART NUMBER: PC1760K004 <i>Not compatible with Rear Bumper Protection Film</i>	EXHAUST TIP PART NUMBER: PC4130K001



For a full range of Genuine Toyota Accessories visit www.toyota.co.za

EXTERIOR FUNCTIONAL ACCESSORIES

NUDGE BARS				SIDE STEPS	
					
OVAL: STAINLESS STEEL PART NUMBER: PZN521D106B	OVAL: STAINLESS STEEL AND MILD STEEL COMBINATION PART NUMBER: PZN521D107B	LOUVRE: STAINLESS STEEL PART NUMBER: PZN521D110B	LOUVRE: STAINLESS STEEL AND MILD STEEL COMBINATION PART NUMBER: PZN521D111B	OVAL: STAINLESS STEEL PART NUMBER: PZN581D600	OVAL: STAINLESS STEEL AND MILD STEEL COMBINATION PART NUMBER: PZN581D607
					
OVAL: WITH PI COVER, STAINLESS STEEL PART NUMBER: PZN521D108A	OVAL: WITH PI COVER, STAINLESS STEEL AND MILD STEEL COMBINATION PART NUMBER: PZN521D109A	STAINLESS STEEL WITH SILVER ANODISED SUMP PLATE AND PI COVER PART NUMBER: PZN521D101	MILD STEEL WITH BLACK ANODISED SUMP PLATE AND PI COVER PART NUMBER: PZN521D103	OVAL: SILVER ANODISED WITH STAINLESS STEEL TUBE PART NUMBER: PZN581D606	OVAL: BLACK ANODISED STEP WITH STAINLESS STEEL TUBE PART NUMBER: PZN581D605
		ROOF RACK 		INTERIOR TONNEAU COVER 	
STAINLESS STEEL WITH BLACK ANODISED SUMP PLATE AND PI COVER PART NUMBER: PZN521D102	MILD STEEL WITH SILVER ANODISED SUMP PLATE AND PI COVER PART NUMBER: PZN521D114	ROOF RACK PART NUMBER: PC3010K005S1	INTERIOR TONNEAU COVER PART NUMBER: PZN651D100		

TOW BARS



REAR STEP TOW BAR
PART NUMBER: PZN52D400



FIXED FLANGE TOW BAR
PART NUMBER: PZN52D403

Tow bars to be ordered in conjunction with Wiring Harness (PZN81D200A)

INTERIOR ACCESSORIES

FLOOR MATS RUBBER



FLOOR MATS: RUBBER
MANUAL: PC2100K01AM1
AUTOMATIC: PC2100K018M1

LUGGAGE TRAY



LUGGAGE TRAY
PART NUMBER: PC2460K002

LOAD AREA MAT



LOAD AREA MAT: TEXTILE
PART NUMBER: PZN58D102

LOAD AREA MAT: RUBBER
PART NUMBER: PZN58D101

SEAT COVER



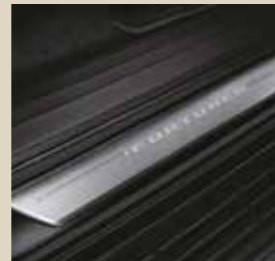
SEAT COVER: CANVAS
PART NUMBER: PZN71D002

CARGO NET



CARGO NET - VERTICAL
PART NUMBER: PC2460K001

SCUFF PLATES



SCUFF PLATES (SET OF 4)
PART NUMBER: PC3820K005

COMPRESSOR



AIR COMPRESSOR (12V)
PART NUMBER: PZ06800003

EXTERIOR PROTECTION ACCESSORIES

SIDE VISORS



SIDE VISOR: DARK TINT (4pcs)
PART NUMBER: PC1620K00H

WINDOW SAFETY FILM



WINDOW SAFETY FILM
100 MICRON: PZN56X3039
150 MICRON: PZN56X3040

BUMPER PROTECTION FILM



REAR BUMPER PROTECTION FILM - BLACK
PART NUMBER: PZN75D300
Not compatible with Rear Bumper Step Guard

BONNET PROTECTOR



BONNET PROTECTOR: CLEAR
PART NUMBER: PZN53DD001



BONNET PROTECTOR: CARBON FIBRE LOOK
PART NUMBER: PZN53DD000



BONNET PROTECTOR: BLACK
PART NUMBER: PZN53DD002

WHEEL PROTECTION



WHEEL LOCKNUTS: ALLOY WHEELS
PART NUMBER: PZN33U2003

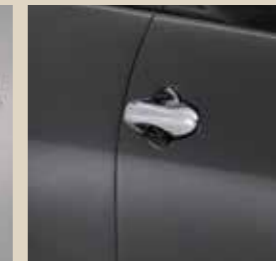


SPARE WHEEL LOCK: PAD TYPE
PART NUMBER: PC4580K002



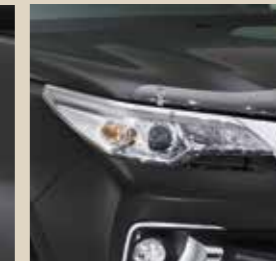
SPARE WHEEL LOCK: PLUG TYPE
PART NUMBER: PC4580K001

DOOR HANDLE PROTECTION FILM



DOOR HANDLE PROTECTION FILM
2-PIECE: PZN55DD301
4-PIECE: PZN55DD302
Not compatible with door handle garnish

HEADLAMP PROTECTOR



HEADLAMP PROTECTOR: CLEAR
HALOGEN MODELS: PZN81D001
LED MODELS: PZN81D002
Not compatible with headlamp garnish



HEADLAMP PROTECTOR: CARBON FIBRE LOOK
HALOGEN MODELS: PZN81D000
LED MODELS: PZN81D003



Toyota vehicles are known for their Quality, Durability and Reliability. Keeping your Toyota Genuine means no compromises in terms of safety, performance and resale value. The range of Genuine Products and Approved Service will ensure complete peace of mind throughout the ownership journey and beyond. For more information on how to keep your Toyota genuine visit www.toyota.co.za/genuine

TOYOTA GENUINE PRODUCTS

For guaranteed fit and function, Genuine Parts are essential in maintaining the safety and reliability of your vehicle. **Genuine Parts** comply with all safety, regulatory and environmental requirements, making it the obvious choice. The same exacting precision applies to **Toyota Accessories**, developed by engineers with extensive knowledge on vehicle integration - you can enhance the appeal and functionality of your Fortuner without compromising its safety features or warranty. Warranties are about peace of mind, and the **Genuine Unlimited Warranty** is designed to provide superior cover (up to 6 years or 8 years, unlimited mileage) and a seamless claims process thanks to full integration with Toyota systems. The **Genuine Extended Service Plan** also enjoys exclusive approval by Toyota SA and provides flexible extension options up to 7 years or 200 000 km to suit your period of ownership. Paying today's rates for tomorrow's maintenance is a sensible way to protect the resale value of your Fortuner by means of a full service history.

TOYOTA APPROVED SERVICES

Specialised vehicle maintenance requires first-class facilities, advanced equipment and expert knowledge. **Toyota Quality Service** not only promises accurate diagnosis and repair, but also a philosophy of building trust through a genuine concern for the needs of our customers. To complement the extensive network of Toyota dealers, we have a vast number of **Accredited Body and Paint Repairers**, selected on stringent criteria to ensure outstanding workmanship and customer service. You can maintain your vehicle's pristine condition without compromising its warranty thanks to the exclusive use of Genuine Parts by our Accredited Repairers. Offering 24-hour access to a full complement of assistance and recovery benefits, **Toyota Roadside Assistance** provides the peace of mind that competent support is only a phone call away.

TOYOTA GENUINE MEANS

✓ UNCOMPROMISED SAFETY ✓ GUARANTEED QUALITY ✓ PEACE OF MIND



Download the **MyTOYOTA** App from the Google Play Store or the Apple iStore to receive the latest Toyota news, keep an eye on your vehicle's finance and book your vehicle for a service. You can also book a test drive or arrange roadside assistance, all on your phone.

DISCLAIMER:

The information contained in this brochure is provided as is and without any warranties of any kind, whether expressed or implied, including but not limited to, implied warranties of satisfactory quality, fitness for a particular purpose and/or correctness. The contents of this brochure are for general information purposes only and do not constitute advice. Toyota Motor Corporation of Japan and Toyota South Africa Motors (Pty) Limited does not represent or warrant that the information and/or specifications contained in this brochure are accurate, complete or current and specifically stipulates that certain vehicle details and specifications contained in this brochure may differ in available models. Therefore, neither Toyota Motor Corporation of Japan nor Toyota South Africa Motors (Pty) Limited make any warranties or representations regarding the use of the content, details, specifications, or information contained in this brochure in terms of their correctness, accuracy, adequacy, usefulness, timeliness, reliability or otherwise, in each case to the fullest extent permitted by law. Please note that claiming of input VAT needs to be verified by customers prior to vehicle purchase as these rulings are subject to SARS interpretation. Toyota South Africa Motors' rights remain reserved.

FINANCIAL
SERVICES



TOYOTA FINANCIAL SERVICES

There is no 'one-size-fits-all' when it comes to vehicle finance and insurance, there is only you. With fast, flexible and convenient services we will structure the perfect Fortuner deal for you.

At Toyota Financial Services, we believe that purchasing your Toyota should be as enjoyable as driving it. Toyota Financial Services is the fast, flexible and convenient means of financing your Fortuner. We have created a range of financial products that suit both private and business customers, easily accessible through your local Toyota dealer. We take the hassle out of arranging finance.

Toyota Financial Services (South Africa) Ltd is an authorised Financial Services (FSP No. 7454) and Registered Credit Provider (NCRCP62). For comprehensive information about products offered by Toyota Financial Services, visit www.toyota.co.za/toyota-finance

